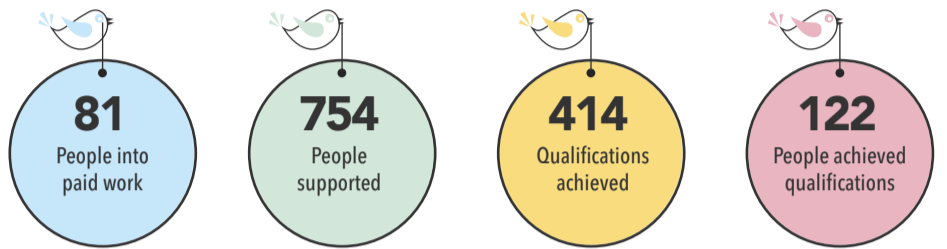


We're a social enterprise supporting people with learning difficulties and autism into jobs with a future

For every £1 invested in NOW Group we generated

**£15**  
in social value

Our services have saved **£1,108,282** in day opportunity places



**IMPACT CARD 2018 - 2019**  
www.nowgroup.org



We offer a range of solutions to businesses including corporate catering, recruitment and supported employment, social impact measurement and disability awareness customer service training.

Get in touch to find out more

Tel: 028 9043 6400

@NOW\_Group

nowgrouporg

www.nowgroup.org

Data and impact measurement by: www.gaugeni.co.uk  
Design by: www.gerry-can.com

Like our Impact Card?  
www.gaugeni.co.uk can work with you to produce one for your business



At NOW Group we are passionate about supporting people with learning difficulties and autism into jobs with a future. We do this by offering a range of services that support people at whatever stage of life they are at. Whether that is just leaving school or college, unemployed, returning to work or graduates. We also offer social groups, a family service for new or expectant parents with a learning difficulty or autism and are the organisation behind the JAM Card.



This project is part funded through the Northern Ireland European Social Fund Programme 2014 – 2020, the Department for the Economy and the Department for Communities.

"Growing up I didn't have opportunities and faced a lot of discrimination. Where I am sitting here now is a miracle, I feel there is hope for my future, I didn't feel that before. I have only known people here a short period of time, but I feel very safe here".

Participant



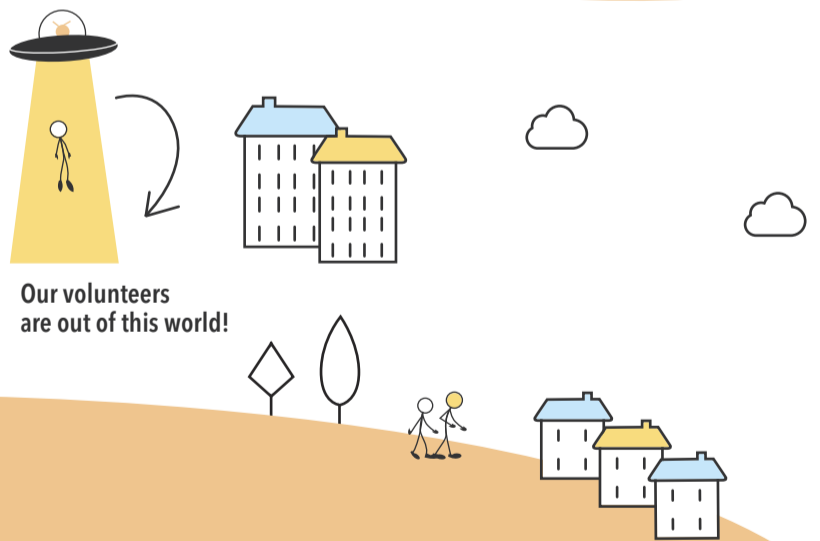
"As a Manager supporting an employee with a disability, NOW Group has been excellent to deal with. The support provided to my employee has been great and he has made significant progress and it's down to support he's getting outside of work. Our keyworker ensures she is helping with the areas we have discussed, and the information and coping strategies given are consistent with the ones I provide."



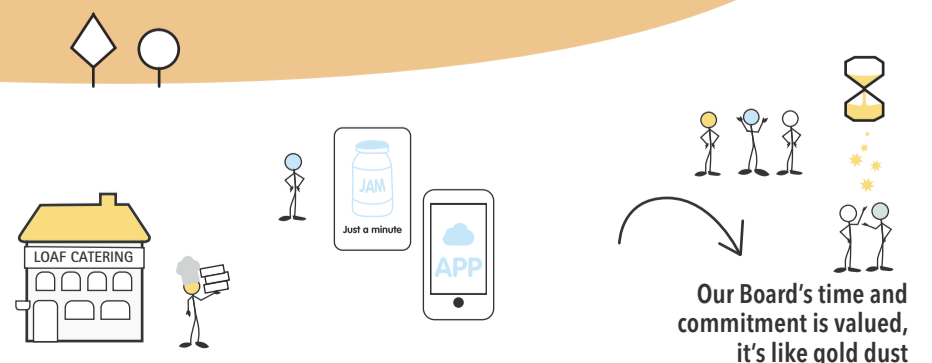
Employer

Since joining NOW Group, the support our family have received from the group and our support worker has been phenomenal. They have helped find our son employment and continue to check in on his progress and give him reassurance and confidence in the workplace which has led to him progressing in his job. Further to this, his support worker is always available to reach and answer any questions we may have."

Parent



Each year we commission an independent Social Return on Investment evaluation of our services to find out what impact we have made. This year for every £1 invested in our services, £15 social value has been generated by factors including participants earning a wage and coming off benefits, parents being less stressed and employers having a better awareness of the benefits of a diverse workforce.



For every £1 invested in NOW Group we generated

**£15**  
in social value

Employment and training

**81**

People into paid jobs

**£340K**

Earned in wages by participants

**34**

People into voluntary work

**115**

People availed of work experience

**£90k**

Saved in benefits payments

**754**

People supported

**66**

Workable (NI) participants supported

**414**

Qualifications achieved

**122**

People achieved qualifications

Community Opportunities

**41**

Young people supported through our Community Opportunities Programme



Our volunteers time is gold dust



**20k**

JAM Card users



**104**

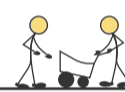
People took part in our social groups

Community Activities



**801**

Home visits completed



**58**

Parents supported through the Family Service

Family Service



**109**

Volunteers donated 4909 hours



**1254**

Hours support provided to school students

Our impact with employers, customers and employees

**£200k**

Social value generated for employers

Growth and sustainability



**28%**

Increase in social enterprise income



**96**

People had placements in Loaf catering outlets



**89%**

Of participants sustained employment over a six month period



**224**

New employers engaged with



**26**

New permanent staff



**1656**

Hours training completed by staff



Deloitte One Million Futures social impact initiative gave us

**153**

Volunteering hours

At a value of **£7.3k**

Investment

